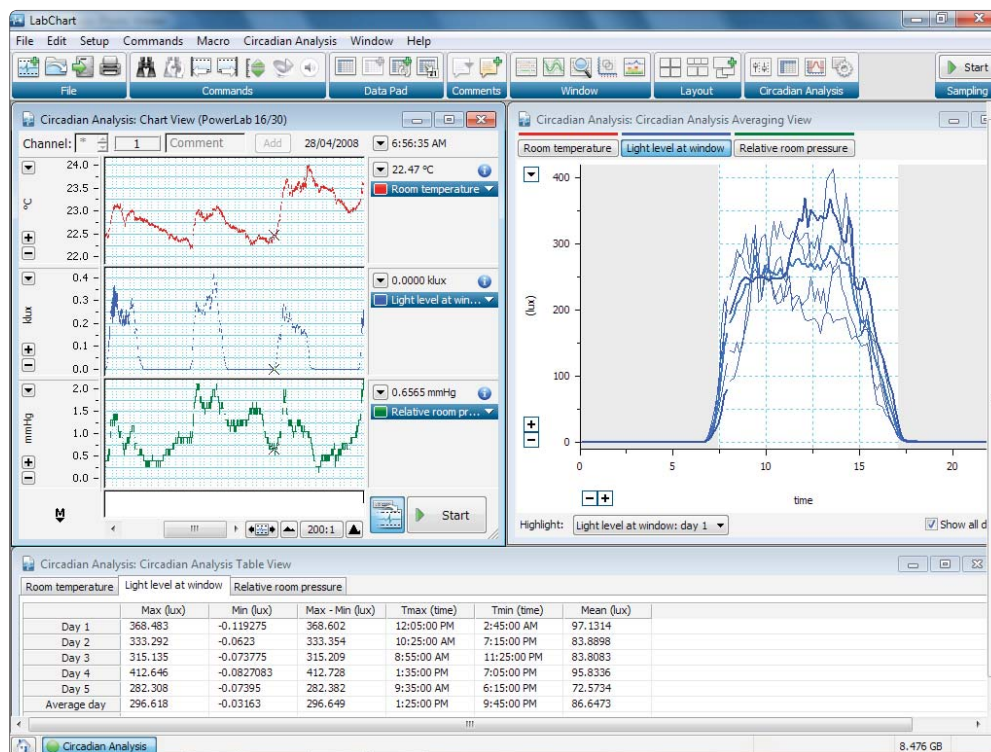


Circadian Analysis

Circadian Analysis Module for LabChart® Software & PowerLab®

Features & Benefits

- Analyze continuous or intermittent data with a daily pattern
- Generate graphical and tabular views of circadian data
- Automatically average your circadian data
- Customize circadian period start time and length
- Exclusion filter for outlying data
- Applications: Hormonal studies, sleep studies, telemetry, long term studies.

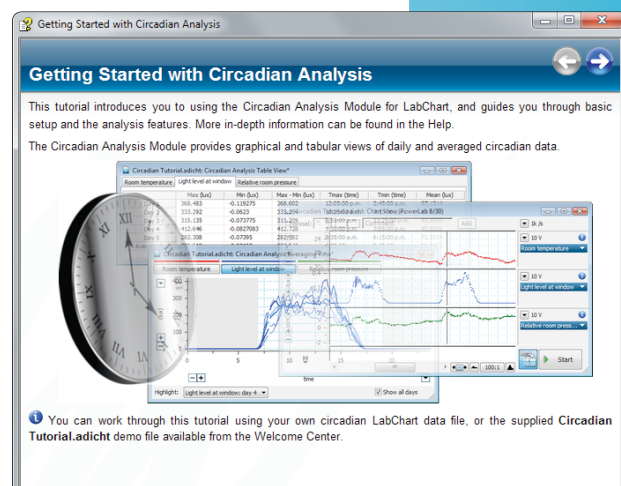


LabChart showing Chart View (top left), Averaging View (top right) and Table View (bottom).

The Circadian Analysis Module for LabChart (Windows) analyzes data with a daily pattern, and generates graphical and tabular views of the daily and averaged circadian data. It can be used for hormonal studies, sleep studies, telemetry research and long-term studies of physiological variables.

With the Circadian Analysis module, you can analyze day-by-day data over multiple channels as continuous, intermittent or calculated data. The module can automatically average circadian data and makes it easy to customize circadian period start time and length. There is an optional data exclusion filter to ignore data that falls out of range.

The LabChart Welcome Centre features a Getting Started Tutorial that guides you through the Circadian Analysis Module features using either your own data file or a supplied sample data file.



Circadian Analysis Module

Detection & Analysis Settings

The Circadian Analysis Settings dialog allows you to select channels to be included for analysis. You can adjust the time settings including day length, start time and averaging interval, as well as enable and configure the data exclusion filter and light on/off shading feature in the Averaging View.

Averaging View

Averaging View plots average interval data for single or multiple channels and you can view channels in whole or separately. All day plots are displayed as an overlay on top of the average day. You can select specific days and values for any particular point in time by selecting it from the highlight drop-down list, hovering or clicking on the trace.

Table View

Table View automatically displays calculated parameters for each single day, as well as determining an average day. The Table View logs all calculated pressure parameters in real time, and you can tab through the Table View for different channels. Table rows are linked to various LabChart windows; highlighting a row will automatically show the corresponding beat in the Analysis View and LabChart View data.

Exporting Data

You can export the Averaging View plot and Table View as text or image formats.

LabChart Pro

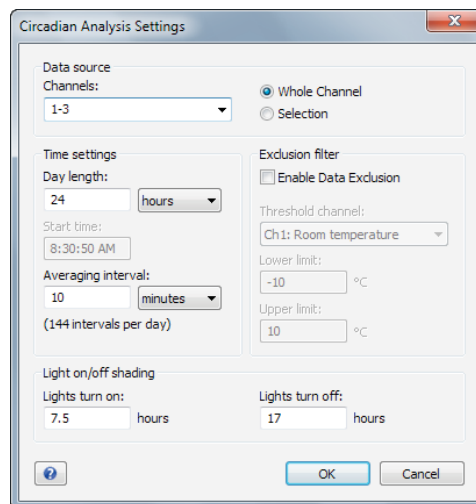
LabChart Pro provides researchers with more acquisition and analysis power at a great price. It comprises LabChart software, LabChart Modules (including the Circadian Analysis Module) and 5 years of free upgrades. You can obtain any new LabChart Modules released during the 5 year period at no extra cost. All software is conveniently available for download. An evaluation version is available.

Ordering Information

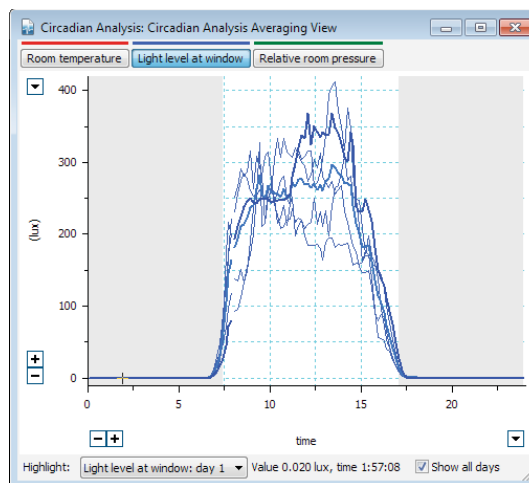
| | |
|-----------------------------------|--|
| Circadian Analysis Module | LabChart Pro* (sold separately) |
| MLS395/7 Circadian Analysis (Win) | MLS260/7 LabChart Pro (Win & Mac) |

* LabChart Pro includes LabChart software and all LabChart Modules, providing powerful data acquisition and analysis capabilities.

 Share your data with colleagues. Free LabChart Reader – download to view and analyze LabChart data.



Circadian Analysis Settings Dialog



Averaging View

| | Max (lux) | Min (lux) | Max - Min (lux) | Tmax (time) | Tmin (time) | Mean (lux) |
|-------------|-----------|------------|-----------------|-------------|-------------|------------|
| Day 1 | 368.483 | -0.119275 | 368.602 | 12:05:00 PM | 2:45:00 AM | 97.1314 |
| Day 2 | 333.292 | -0.06623 | 333.358 | 10:28:00 AM | 7:11:00 PM | 83.8899 |
| Day 3 | 315.135 | -0.073775 | 315.209 | 8:55:00 AM | 11:25:00 PM | 83.8083 |
| Day 4 | 412.646 | -0.0827083 | 412.728 | 1:35:00 PM | 7:09:00 PM | 95.8336 |
| Day 5 | 282.208 | -0.07295 | 282.282 | 9:25:00 AM | 6:15:00 PM | 72.5734 |
| Average day | 296.618 | -0.03163 | 296.649 | 1:25:00 PM | 9:45:00 PM | 86.6473 |

Table View

PowerLab, MacLab, LabChart, LabTutor and LabAuthor are registered trademarks and Chart and Scope are trademarks of ADInstruments Pty Ltd. All other trademarks are the property of their respective owners. CA08/11

PowerLab systems and signal conditioners meet the European EMC directive. ADInstruments signal conditioners for human use are approved to the IEC60601-1 patient safety standard and meet the CSA C22.2 No. 601.1-M90 and UL Std No. 2601-1 safety of medical electrical equipment standards.



ADINSTRUMENTS.com

North America
Tel: +1 888 965 6040
Fax: +1 866 965 9293
info.us@adstruments.com

United Kingdom
Tel: +44 1865 332 050
Fax: +44 1865 332 051
info.uk@adstruments.com

Germany
Tel: +49 6226 970105
Fax: +49 6226 970106
info.de@adstruments.com

North Asia
Tel: +86 21 5830 5639
Fax: +86 21 5830 5640
info.cn@adstruments.com

South East Asia
Tel: +60 3 8024 5296
Fax: +60 3 8023 6307
info.sea@adstruments.com

Japan
Tel: +81 52 932 6462
Fax: +81 52 932 6755
info.jp@adstruments.com

South America
Tel: +56 2 356 6749
Fax: +56 2 356 6786
info.cl@adstruments.com

Brazil
Tel: +55 11 3266 2393
Fax: +55 11 3266 2392
info.br@adstruments.com

South Asia
Tel: +91 11 4306 5615
Fax: +91 11 4306 5614
info.in@adstruments.com

Australia
Tel: +61 2 8818 3400
Fax: +61 2 8818 3499
info.au@adstruments.com

New Zealand
Tel: +64 3 477 4646
Fax: +64 3 477 4346
info.nz@adstruments.com

Head Office
Tel: +61 2 8818 3400
Fax: +61 2 8818 3499
info.au@adstruments.com

ISO 9001:2008 Certified Quality Management System

