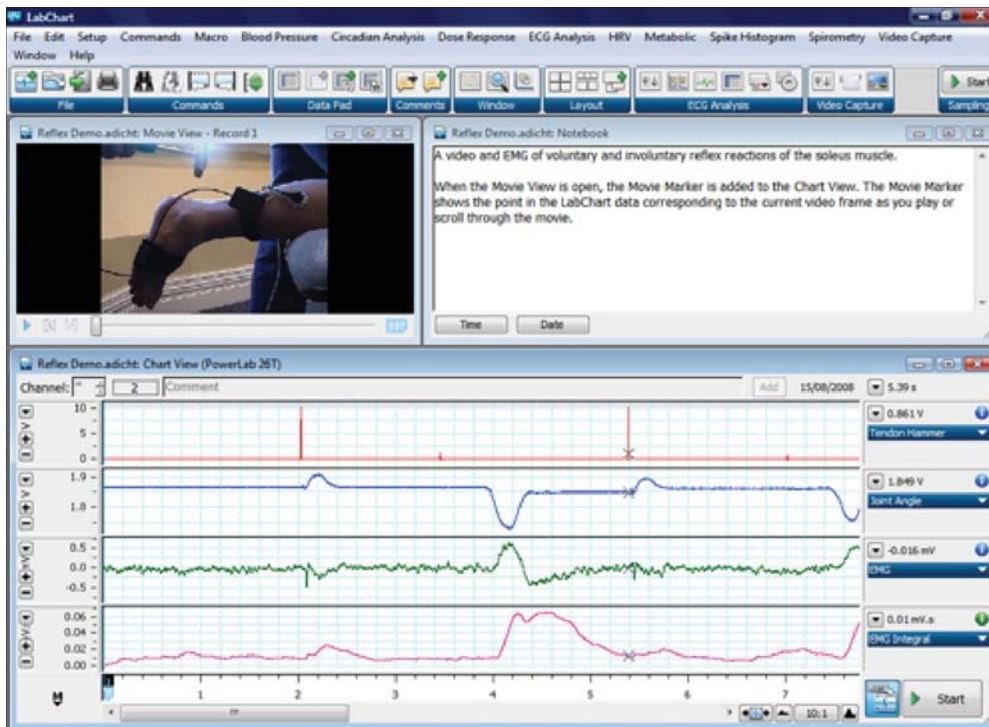


Video Capture

Video Capture Module for LabChart® Software & PowerLab®



A synchronized recording of LabChart data (EMG, Joint Angle and Tendon Hammer Strikes) with a .wmv movie of the experiment. Note: The Movie Marker in Chart View and the Progress Marker in QuickTime correspond to the same time in the synchronized recordings.

The Video Capture Module adds audio and video capability to LabChart. The module allows the synchronized recording and playback of a Windows Media Video or QuickTime movie and LabChart data file.

It allows you to record a movie directly to computer using a personal video camera, save it and link it to the LabChart data file. The recorded movie and LabChart data file can be played back together allowing users to observe what is happening in the movie simultaneously with any point in the recorded data, or vice versa.

The LabChart Welcome Centre features a Getting Started Tutorial that guides you through the Video Capture Module features using either your own data file or a supplied sample data file.

Video Capture Module applications include studies that require video observation with data acquisition. Sample applications include exercise physiology, sleep studies, speech studies and animal studies.

LabChart Pro provides researchers with more acquisition and analysis power at a great price. It comprises LabChart software, LabChart Modules (including the Circadian Analysis Module) and 5 years of free upgrades. You can obtain any new LabChart Modules released during the 5 year period at no extra cost. All software is conveniently available for download.

Features & Benefits

- Synchronize video or audio with your LabChart data
- Suitable for use with most video cameras and frame capture cards
- Preview the video quality in LabChart before recording data

Video Capture Module

The Video Capture Module is suitable for use with a wide range of video cameras and capture cards. Captured films are automatically stored as *.wmv files; LabChart data is saved as an *.adicht file.

The Camera Preview window shows a live preview from the camera so you can adjust the quality of your recording before the experiment. The draggable Movie Marker makes navigation between LabChart data or movie frames easy. Alternatively, you can scroll within the movie and view each point of interest alongside the corresponding data.

Settings

Video Capture allows for selections including:

- video and/or audio recordings
- control of start/stop recording
- quality of recording
- video/audio instrument settings
- synchronization settings of recording devices with LabChart to allow frame-accurate video/data recordings
- hard disk space allocation

Once recorded, the movie can be played in tandem with the LabChart data file. After recording is finished, the recorded movie can be viewed by clicking on the Movie View dialog box. When the Movie View is open, the Movie Marker can be used to show the point in the LabChart data file corresponding to the current movie frame. This is useful when trying to find the exact data point corresponding to a particular event, or vice versa. You can separate your data into blocks by deleting unwanted sections.

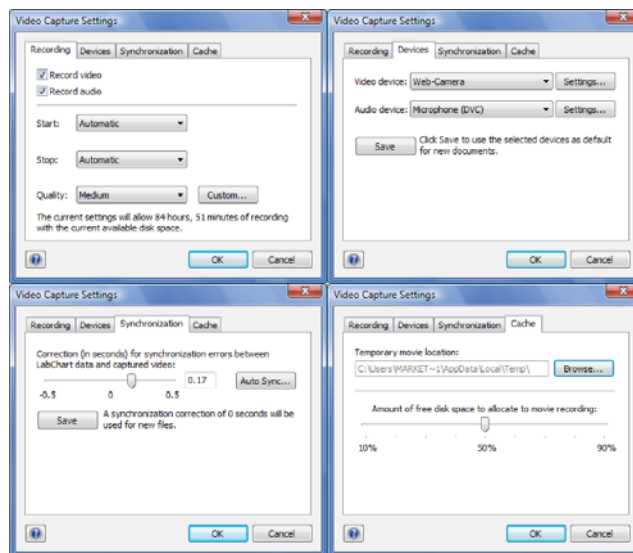
The in-built Video Capture Tutorial will guide you through initial video recording set up in LabChart, including hardware connections, settings, synchronization, recording and analysis.

Ordering Information

Video Capture Module	LabChart Pro* (sold separately)
MLS320/7 Video Capture (Win & Mac)	MLS260/7 LabChart Pro (Win & Mac)

* LabChart Pro includes LabChart software and all LabChart Modules, providing powerful data acquisition and analysis capabilities.

 Share your data with colleagues. Free LabChart Reader – download to view and analyze LabChart data.



Recording, Devices and Synchronization tabs in the Video Capture Settings dialog.



PowerLab, MacLab, LabChart, LabTutor and LabAuthor are registered trademarks and Chart and Scope are trademarks of ADInstruments Pty Ltd. All other trademarks are the property of their respective owners. VC08/10

PowerLab systems and signal conditioners meet the European EMC directive. ADInstruments signal conditioners for human use are approved to the IEC60601-1 patient safety standard and meet the CSA C22.2 No. 601.1-M90 and UL Std No. 2601-1 safety of medical electrical equipment standards.



ADINSTRUMENTS.com

North America
Tel: +1 888 965 6040
Fax: +1 866 965 9293
info.ad@instruments.com

United Kingdom
Tel: +44 1865 332 050
Fax: +44 1865 332 051
info.uk@adstruments.com

Germany
Tel: +49 6226 970105
Fax: +49 6226 970106
info.de@adstruments.com

North Asia
Tel: +86 21 5830 5639
Fax: +86 21 5830 5640
info.cn@adstruments.com

South East Asia
Tel: +60 3 8024 5296
Fax: +60 3 8023 6307
info.sea@adstruments.com

Japan
Tel: +81 52 932 6462
Fax: +81 52 932 6755
info.jp@adstruments.com

South America
Tel: +56 2 356 6749
Fax: +56 2 356 6786
info.cl@adstruments.com

Brazil
Tel: +55 11 3266 2393
Fax: +55 11 3266 2392
info.br@adstruments.com

South Asia
Tel: +91 11 4306 5615
Fax: +91 11 4306 5614
info.in@adstruments.com

Australia
Tel: +61 2 8818 3400
Fax: +61 2 8818 3499
info.au@adstruments.com

New Zealand
Tel: +64 3 477 4646
Fax: +64 3 477 4346
info.nz@adstruments.com

Head Office
Tel: +61 2 8818 3400
Fax: +61 2 8818 3499
info.au@adstruments.com

ISO 9001:2008 Certified Quality Management System

