

Using the Experiments Gallery



This document explains the Experiments Gallery Feature in Chart 5.1

Written by staff of ADInstruments.

Introduction

The Experiments Gallery allows students to access frequently used Chart files and other documents easily and rapidly without having to navigate the hard drive on the computer. The Experiments Gallery is fully customizable, and supports a variety of document types.

Required Equipment

Chart, version 5.1 or later

Locating the Experiments Gallery on your computer

The Experiments Gallery exists as a folder on the computer's hard drive. This directory is located in the Chart folder, which is created after installing Chart 5 (Figure 1). When Chart 5 is launched, the Experiments Gallery dialog is displayed (Figure 2). Files placed in the Experiments Gallery folder are displayed in this dialog box and can be opened either in Chart (Chart Data or Settings Files) or by their native application (QuickTime movies, PDF documents, Word or Excel documents).

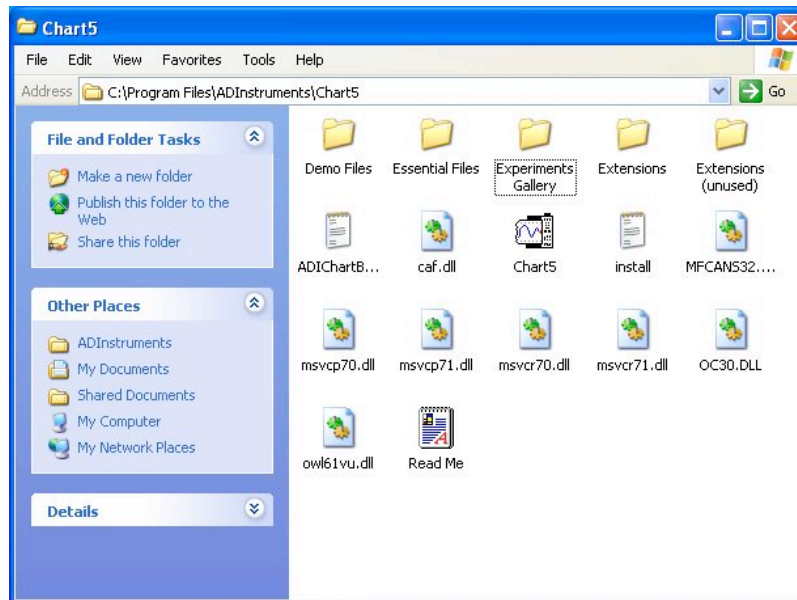


Figure 1. The Experiments Gallery is a folder located in the Chart 5 folder on the computer hard drive.

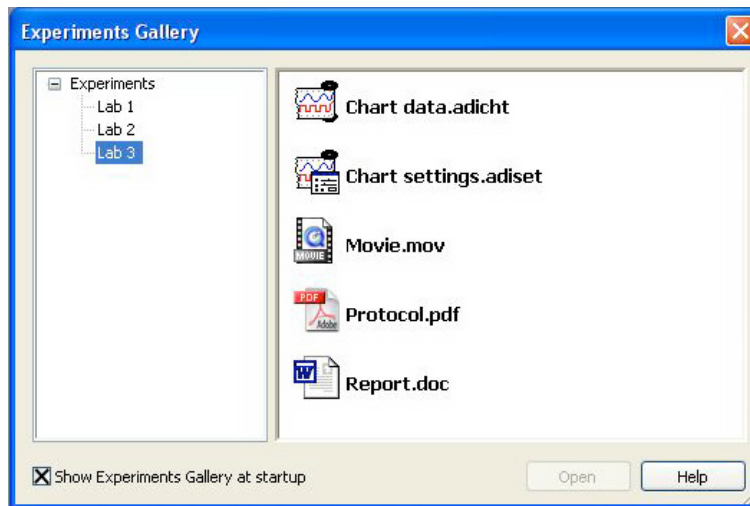


Figure 2. The Experiments Gallery dialog box appears by default after launching Chart 5. Experimental folders are shown in the left-hand side of the dialog box; and their contents appear on the right-hand side. The content of the experimental folders will depend on what files are placed in the Experiments Gallery folder.

Placing files in the Experiments Gallery

Locate the Experiments Gallery folder in the Chart folder on the hard drive. Drag the files or folders that you would like to add to the Experiments Gallery to the Experiments Gallery folder.

As an option, you can place shortcuts to files or folders into the Experiments Gallery folder. They will be accessed normally, as long as the shortcut file path remains intact; i.e., you do not change the file location of the original file or folder.

Supported file formats

Table 1 lists the types of files that are accessible from the Experiments Gallery. These are files you will commonly encounter when using experiments from ADInstruments.

Table 1. A list of files that can be opened from the Experiments Gallery, and the application used to open them.

| Document Type | Opens with Application |
|-------------------------|------------------------|
| Chart Data | Chart |
| Chart Settings | Chart |
| PDF Documents | Adobe Reader/Acrobat |
| Word Documents | Microsoft Word |
| Excel Worksheets | Microsoft Excel |
| PowerPoint Presentation | Microsoft PowerPoint |
| QuickTime Movie | QuickTime Player |

Troubleshooting

Problem: Files created in programs other than Chart do not open (Windows)

Solutions: Make sure that Chart 5.1 or later is running on the computer. A free update is available from www.adinstruments.com/updates.

Make sure that the appropriate application software (Table 1) is installed on the computer.

If using shortcuts, make sure that the directory location of the original file has not changed.

Problem: No files are displayed in the Experiments Gallery.

Solution: Open the Experiments Gallery folder in the Chart folder and make sure it contains the files to be displayed.

Problem: Experiments Gallery dialog does not appear at start-up.

Solution: From the Chart view window, choose **File**→ **Experiments Gallery**. The Experiments Gallery dialog box will appear. Make sure the checkbox in the lower left of the dialog box marked "Show Experiments Gallery at Startup" is checked. The next time Chart is launched, the Experiments Gallery dialog will appear.

Copyright © 2004 ADInstruments. All rights reserved.

MacLab and PowerLab are registered trademarks, and Chart and Scope are trademarks, of ADInstruments. Windows and the Windows logo are either trademarks or registered trademarks of Microsoft Corporation. Macintosh and the Mac logo are either trademarks or registered trademarks of Apple Computer, Inc. Other trademarks are the properties of their respective owners.

www.ADInstruments.com

North America

Tel: +1 888 965 6040
Fax: +1 866 965 9293
info@adinstruments.com

United Kingdom

Tel: +44 1865 891 623
Fax: +44 1865 890 800
info@adi-europe.com

Germany

Tel: +49 6226 970105
Fax: +49 6226 970106
info@adinstruments.de

Asia

Tel: +86 21 5830 5639
Fax: +86 21 5830 5640
info@adinstruments.com.cn

South East Asia

Tel: +60 3 8023 6305
Fax: +60 3 8023 6307
seasia@adinstruments.com

Japan

Tel: +81 52 932 6462
Fax: +81 52 932 6755
info@adi-japan.co.jp

Australia

Tel: +61 2 9899 5455
Fax: +61 2 9899 5847
info@adi.com.au

Indian Subcontinent

Tel: +91 11 3105 2800
Fax: +91 11 2766 2591
india@adinstruments.com

South America

Tel: +56 2 356 6749
Fax: +56 2 356 6786
info@adi-sudamerica.com

International

Tel: +61 2 9899 5455
Fax: +61 2 9899 5847
info@adi.com.au