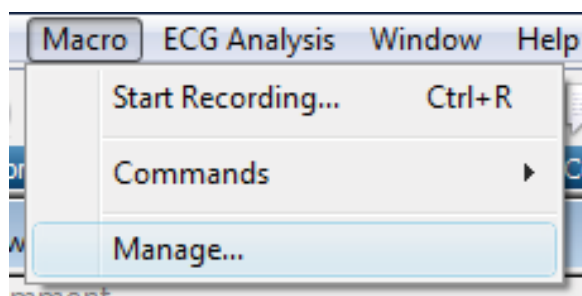


LabChart data files (.adicht) can be automatically converted and saved in other file formats with various ADInstruments file translation extensions available. Rather than individually converting and saving a file, users can automate the conversion of LabChart files in specific folders to any supported file format using the ExportFolder macro available in LabChart.

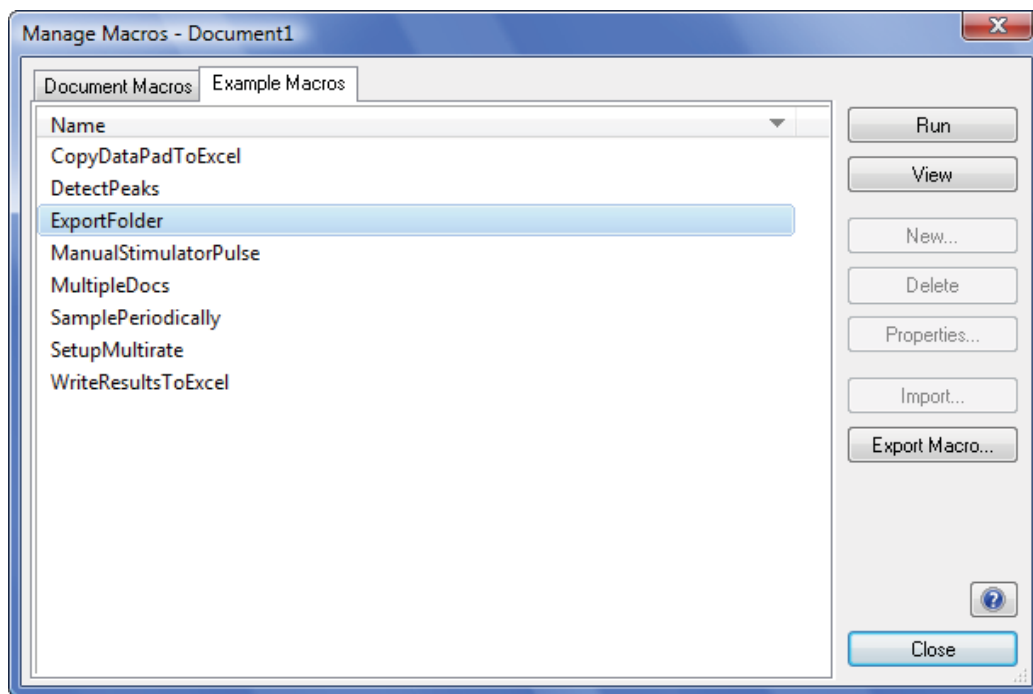
Supported file format include text, binary, MATLAB, European Data Format, Axon Binary, Igor and WAV files.

## Convert LabChart Files in Folders to Text Files Using ExportFolder Macro



*Manage Macro from the menu bar*

- In LabChart, select **Macro > Manage...** to bring up the Manage Macro dialog.

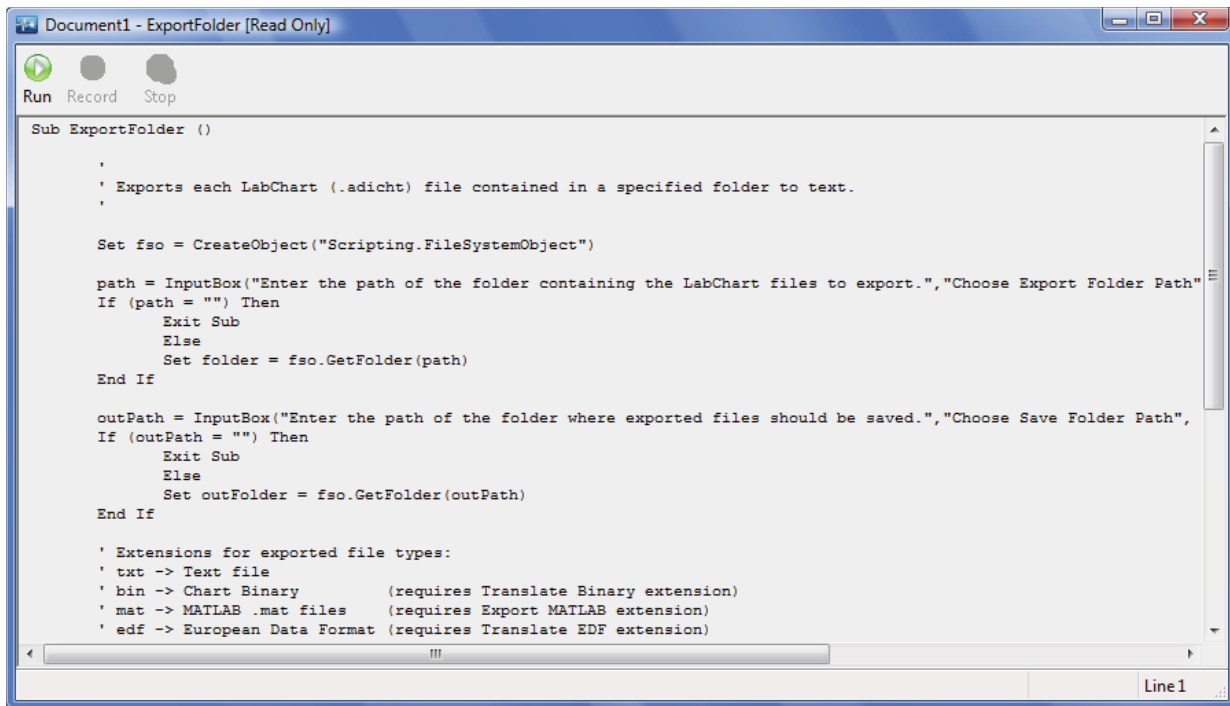


*ExportFolder Macro from the Manage Macros dialog*



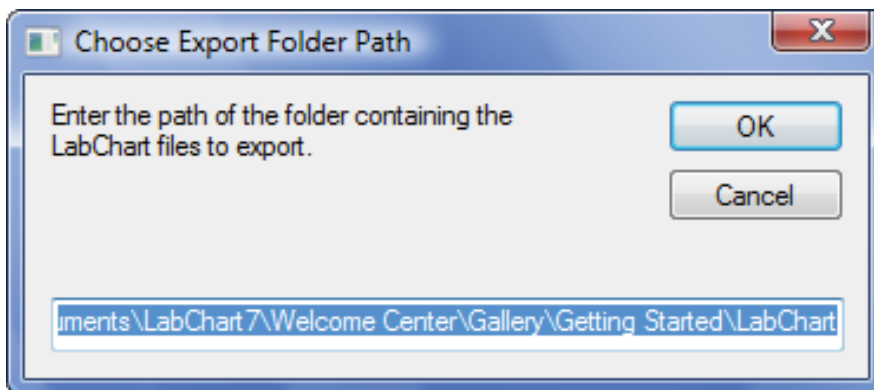
- Click on **Example Macros** tab.
- Select **ExportFolder** macro and press **View** to bring up the **ExportFolder** macro dialog.

Note: By default, the **ExportFolder** macro only exports to .txt files. For conversion into other file format, go to **Convert LabChart Files in Folders to Other Supported Format** section below.



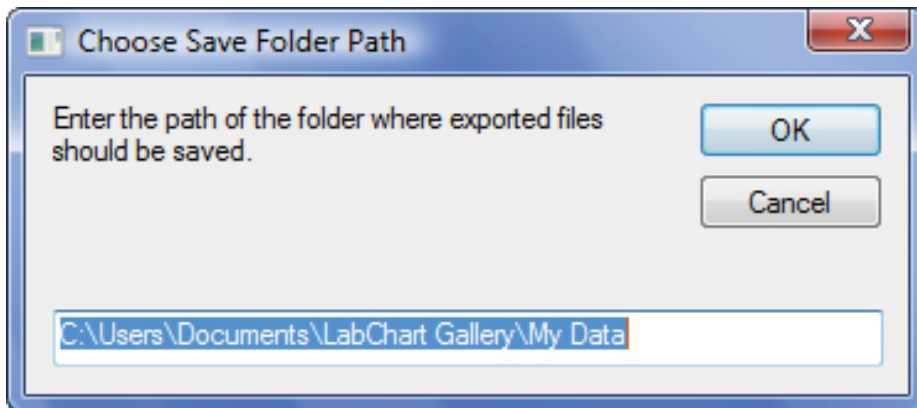
*ExportFolder Macro Dialog with Scripts*

- Click **Run**.



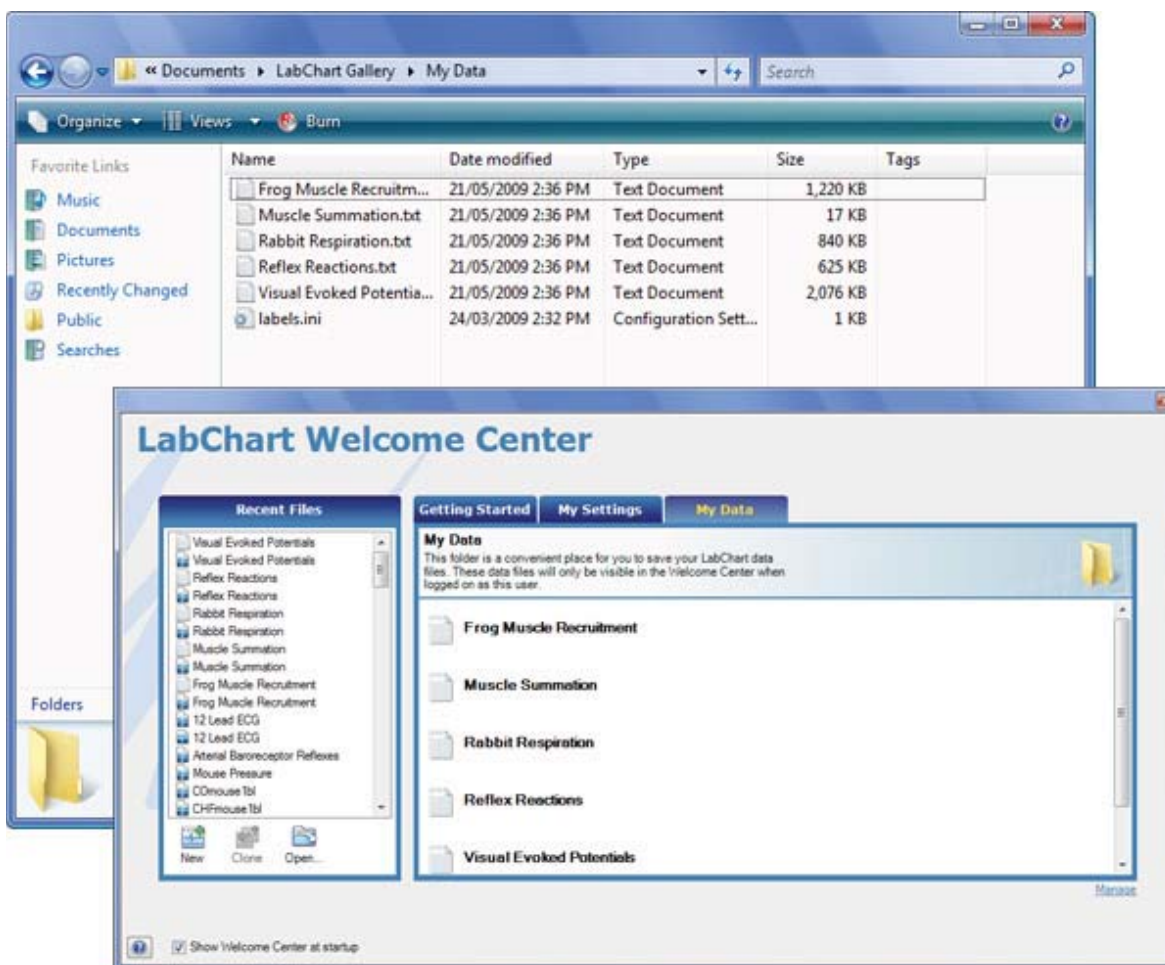
*Choose Export Folder Path Dialog*

- In the **Choose Export Folder Path** dialog, specify the folder containing files to be exported. Click **OK**.



*Choose Save Folder Path Dialog*

- In the **Choose Save Folder Path** dialog, specify the folder where exported files are saved (the default location is the **My Data** folder in user's Documents folder). Click **OK**.

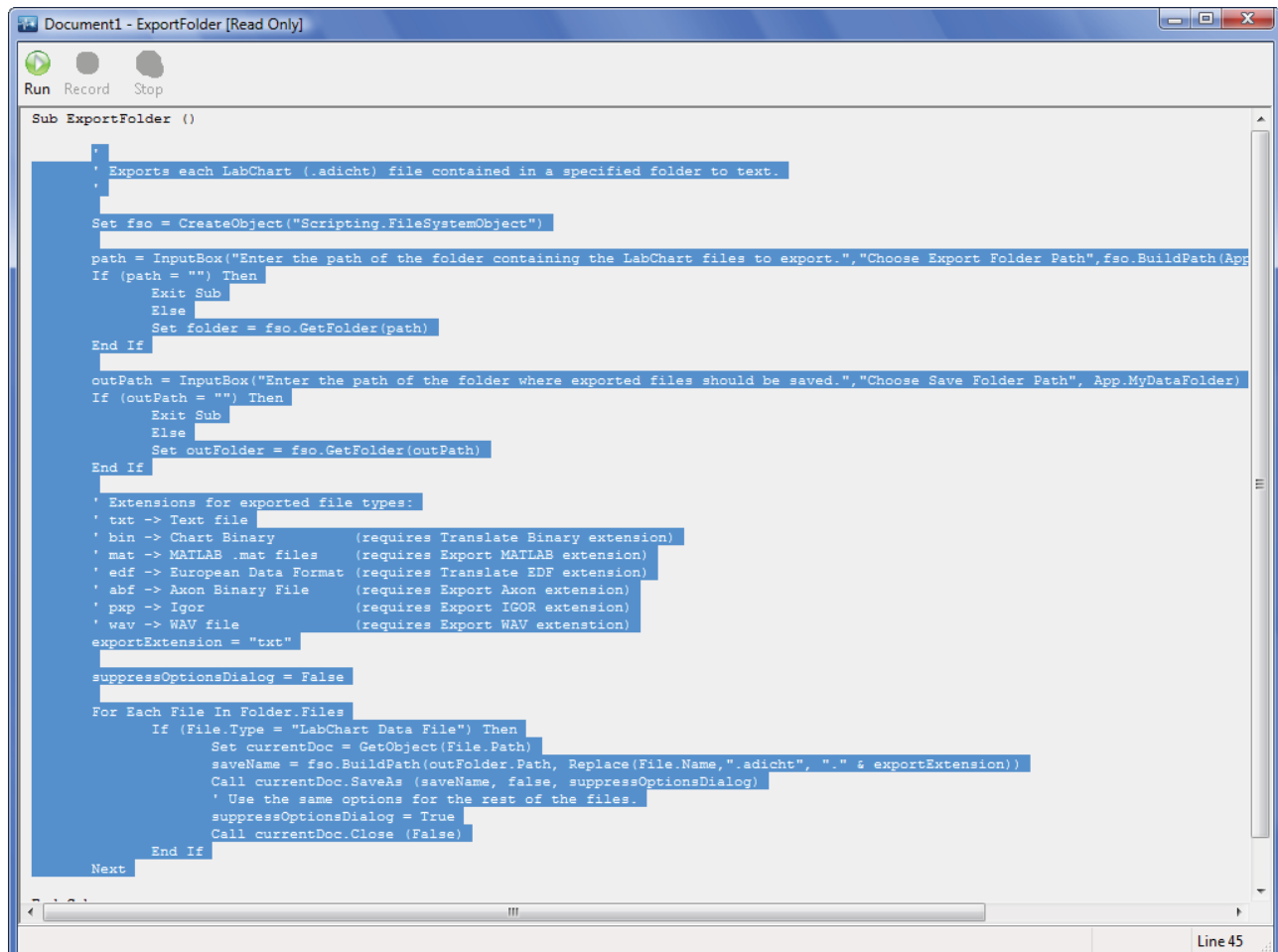


*Converted files in LabChart Welcome Center and My Data folder*

- Converted files can now be accessed from the **My Data** folder or **LabChart Welcome Center**.

## Convert LabChart Files in Folders to Other Supported Format

By default, the **ExportFolder** macro only exports to .txt files. For conversion into other file format, a **New Macro** needs to be created.



```
Sub ExportFolder ()
    ' Exports each LabChart (.adicht) file contained in a specified folder to text.
    '
    Set fso = CreateObject("Scripting.FileSystemObject")

    path = InputBox("Enter the path of the folder containing the LabChart files to export.", "Choose Export Folder Path", fso.BuildPath(App
    If (path = "") Then
        Exit Sub
    Else
        Set folder = fso.GetFolder(path)
    End If

    outPath = InputBox("Enter the path of the folder where exported files should be saved.", "Choose Save Folder Path", App.MyDataFolder)
    If (outPath = "") Then
        Exit Sub
    Else
        Set outFolder = fso.GetFolder(outPath)
    End If

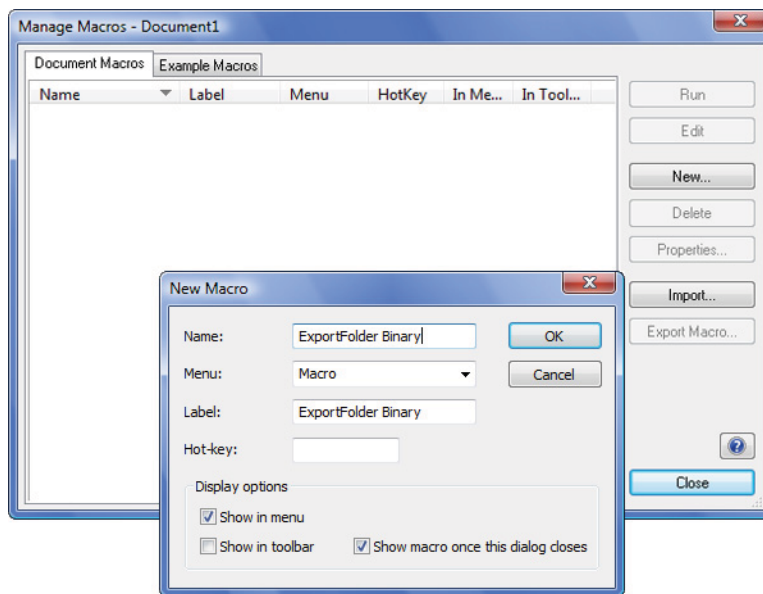
    ' Extensions for exported file types:
    ' txt -> Text file
    ' bin -> Chart Binary (requires Translate Binary extension)
    ' mat -> MATLAB .mat files (requires Export MATLAB extension)
    ' edf -> European Data Format (requires Translate EDF extension)
    ' abf -> Axon Binary File (requires Export Axon extension)
    ' pwp -> Igor (requires Export ICOR extension)
    ' wav -> WAV file (requires Export WAV extension)
    exportExtension = "txt"

    suppressOptionsDialog = False

    For Each File In Folder.Files
        If (File.Type = "LabChart Data File") Then
            Set currentDoc = GetObject(File.Path)
            saveName = fso.BuildPath(outFolder.Path, Replace(File.Name, ".adicht", "." & exportExtension))
            Call currentDoc.SaveAs (saveName, false, suppressOptionsDialog)
            ' Use the same options for the rest of the files.
            suppressOptionsDialog = True
            Call currentDoc.Close (False)
        End If
    Next
End Sub
```

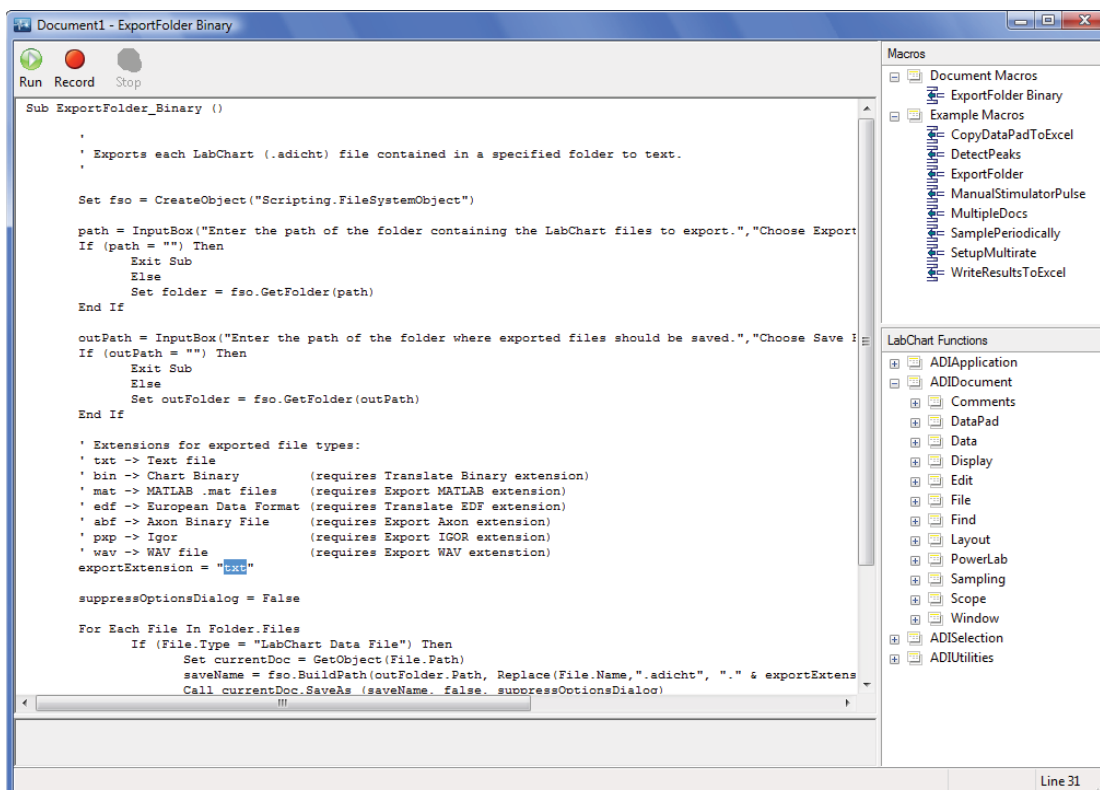
*ExportFolder Macro to be copied*

- Open the **ExportFolder** macro dialog. Select the text as highlighted in the figure above. Either click **Ctrl+C** or right-click to **Copy** the highlighted text.



*Creating New Macro*

- Under the **Document Macros** tab in **Manage Macros** dialog, click on **New...** to bring up the **New Macro** dialog.
- Insert a new name for the macro and click **OK**.
- Click **Edit** to bring up the new macro dialog.



*Pasting and editing new ExportFolder macro*

- Between “**Sub Macro ()**” and “**End Sub**” lines, either click **Ctrl-V** or right-click to **Paste** the copied highlighted text.
- Locate the line of code **exportExtension = “txt”**.
- Change the “**txt**” to
  - o “**bin**” for Chart Binary file
  - o “**mat**” for MATLAB file
  - o “**edf**” for European Data Format file
  - o “**abf**” for Axon Binary file
  - o “**pxp**” for Igor file
  - o “**wav**” for WAV file

## Convert Folder Files without Opening LabChart

LabChart files in a folder can also be converted to another format using a VBScript file that can be generated from the **ExportFolder** macro.

- In LabChart, select **Macro > Manage...** to bring up the **Manage Macro** dialog.
- Select **ExportFolder** (or edited ExportFolder) macro and press **Export Macro...**
- After choosing where to save the file and file name, click **Save**.
- Double click on the saved .vbs file to run the file without opening LabChart.

