

Object-Link Embedding

5. Select the columns of your Chart Data Pad to be OLE linked. This is done by clicking on the first row of data in Column A and moving the cursor to the right until all columns are selected.
6. Select: Edit → Copy.
7. In Excel, select the cell for Row 1, Column A.
8. Select: Edit → Paste Special.
9. Select: Paste Link as Unicode Text.
10. Select: OK (Figure 2).

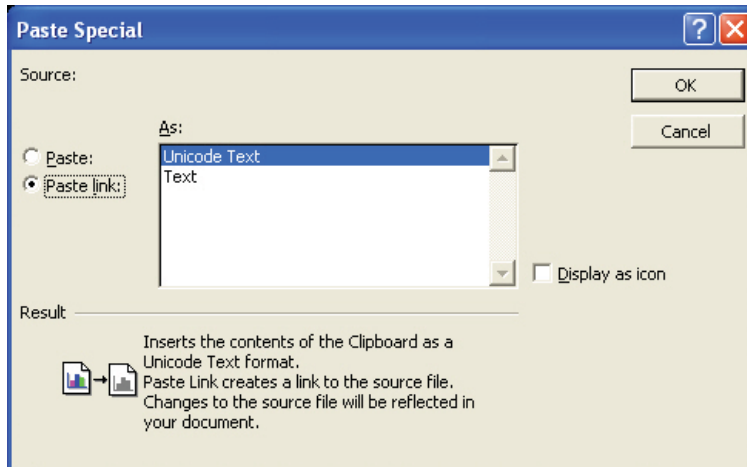
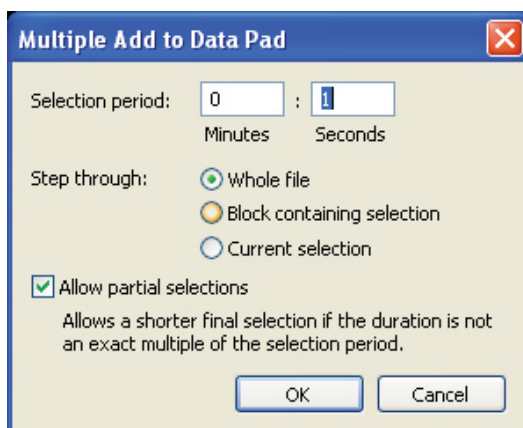


Figure 2

Extracting Data from Chart and OLE Linking to Excel

11. Select: Commands → Multiple Add to Data Pad... (Figure 3)
12. Choose a suitable selection period i.e. 1 second
13. Select: Step through: Whole file.
14. The Allow Partial Selections checkbox should be ticked.
15. Select: OK.

The data will now be added simultaneously to the Chart Data Pad and Excel File.



Note: The data within the first column of Excel will need to be reformatted to adequately display the correct time.

Formatting Excel for Time Data

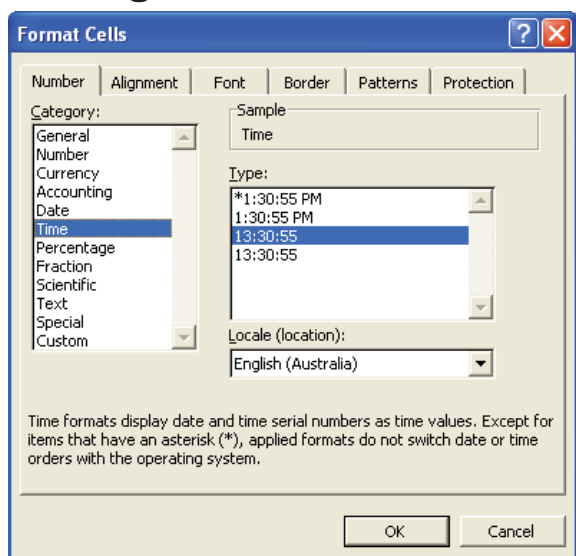


Figure 4

16. In the Excel File, select: Column A.
17. Select: Format → Cells → Time and the 13:30:55 display option (Figure 4).
18. Select: OK.

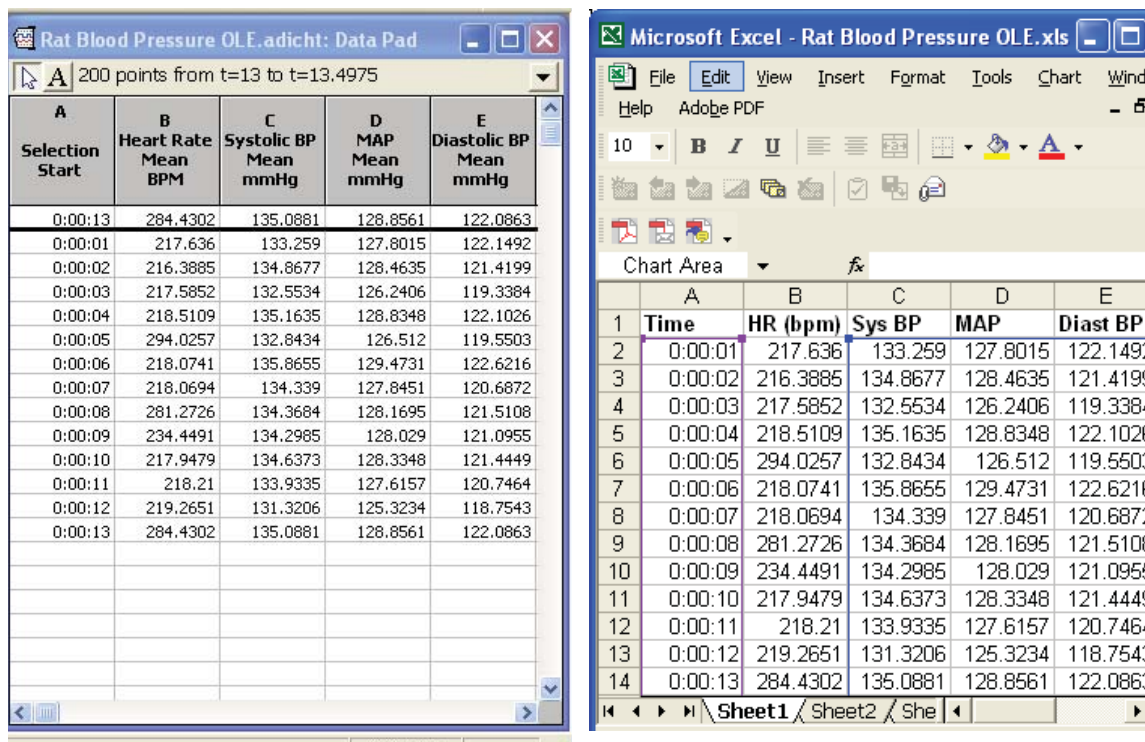


Figure 5

The Chart and Excel data should appear identical (Figure 5). The Excel Data may be used to generate a graph that automatically updates to reflect any changes to the Chart data.