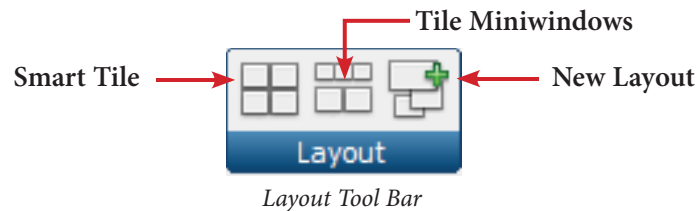
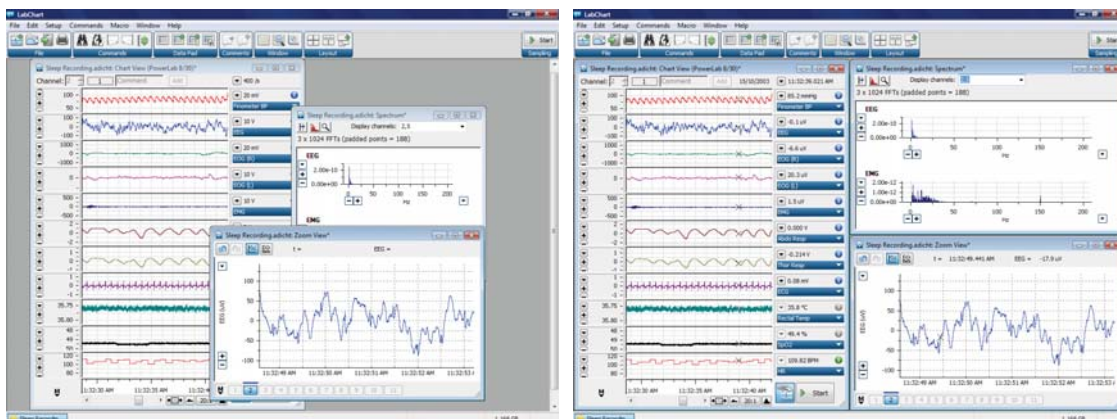


# Editing and Saving Layouts for Recording and Analysis

When recording or analyzing data in LabChart, users may find that they need to open multiple windows. Organizing these LabChart panels in an orderly manner can often be tedious, especially if the user wants to use the same layout for different files or future experiments. LabChart for Windows now provides a Layout featured in the Tool Bar that offers the ability to organize windows much faster and more efficiently. Users can auto arrange the windows in LabChart and save the layout format for future use.



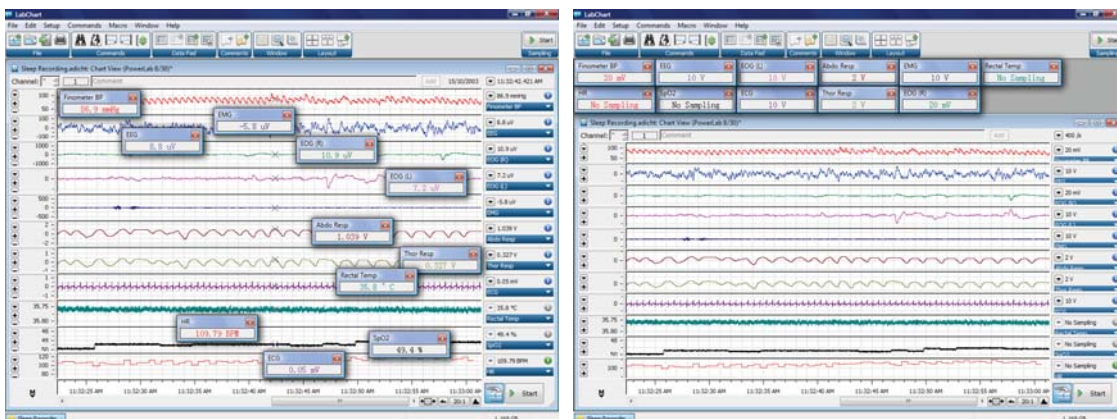
The Layout Tool Bar has a 'Smart Tile' feature that automatically deciphers the number of opened windows (and window sizes) with a click of a mouse. LabChart tiles the windows in an optimum fit and readjusts the window sizes when required.



Before 'Smart Tile'

After 'Smart Tile'

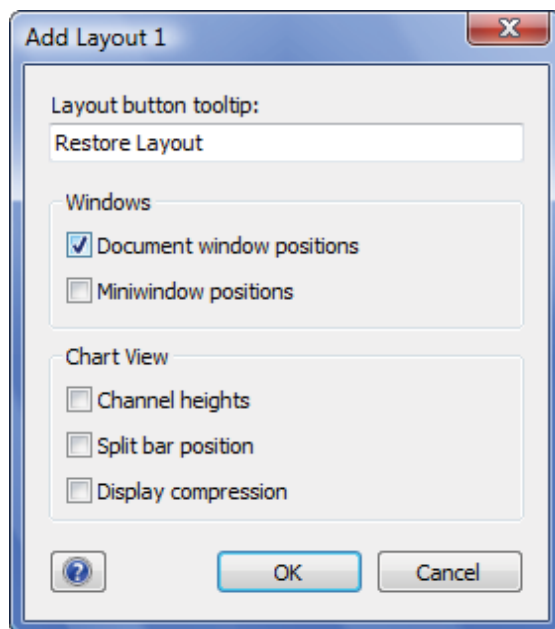
Sometimes the user may have a large number of miniwindows that display values from channels or the Data Pad. Users have the option of tiling all their miniwindows neatly below the LabChart Tool Bar by clicking on 'Tile Miniwindows'.



Before 'Tile Miniwindows'

After 'Tile Miniwindows'

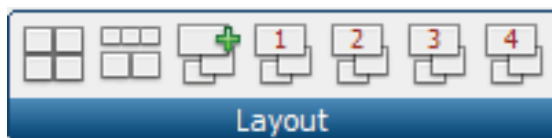
After setting the layout, the user has the option of saving it for future use by clicking the 'New Layout' function. An Add Layout dialog will appear.



*Saving a 'New Layout'*

This dialog offers the user many options in saving layouts. These options include saving their document window positions and miniwindow positions, as well as saving the height of their channels, the horizontal display compression and split bar position.

Once a layout has been saved, it can be accessed quickly and easily via the Layout Tool Bar. Layouts are numbered sequentially as they are saved.



*Layout Tool Bar with four saved layouts*