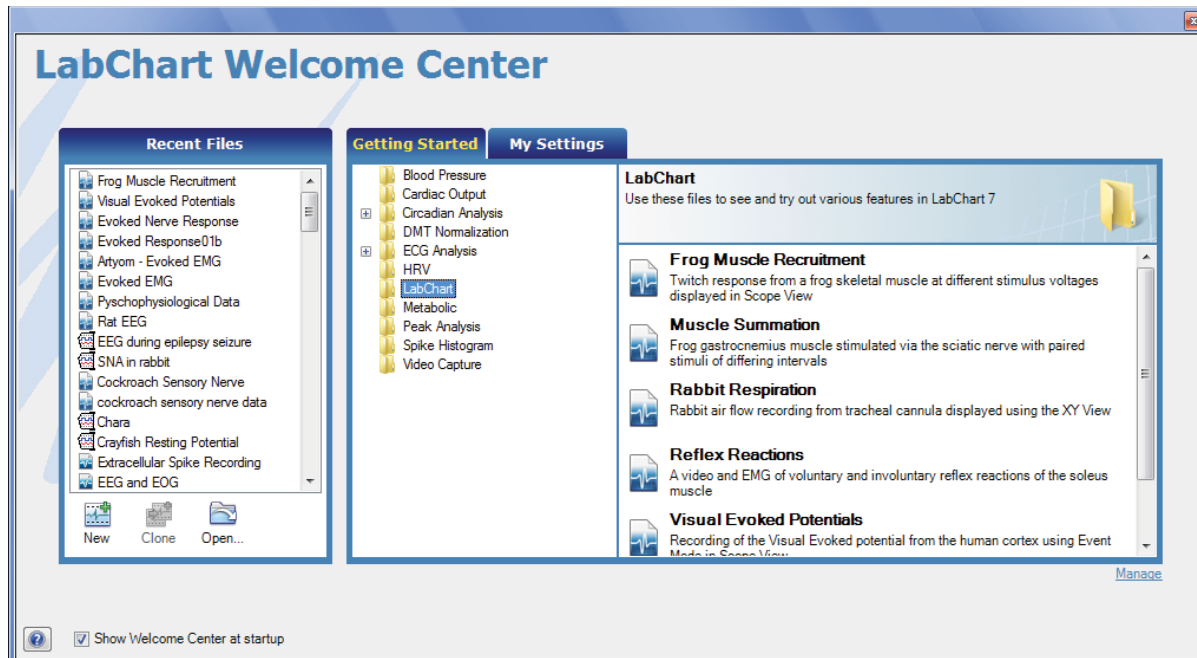


LabChart 7 Welcome Center for Windows provides a structured, easy and fast access to LabChart resources and materials including sample files, settings files, text files, multimedia files and documentation. It is designed to replace the 'Experiments Gallery' feature in previous LabChart versions.



Welcome Center

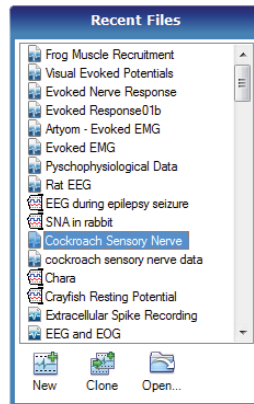
Displaying LabChart 7 Welcome Center

Welcome Center is automatically displayed when LabChart 7 is opened for the first time and when no document is opened in LabChart. Uncheck the 'Show Welcome Center at startup' tick box to turn off automatic display of Welcome Center. Welcome Center can still be accessed via

- 'Welcome Center House' button at the bottom left of LabChart Application Window
- From **File > Welcome Center**
- Shortcut key **Ctrl+H**.



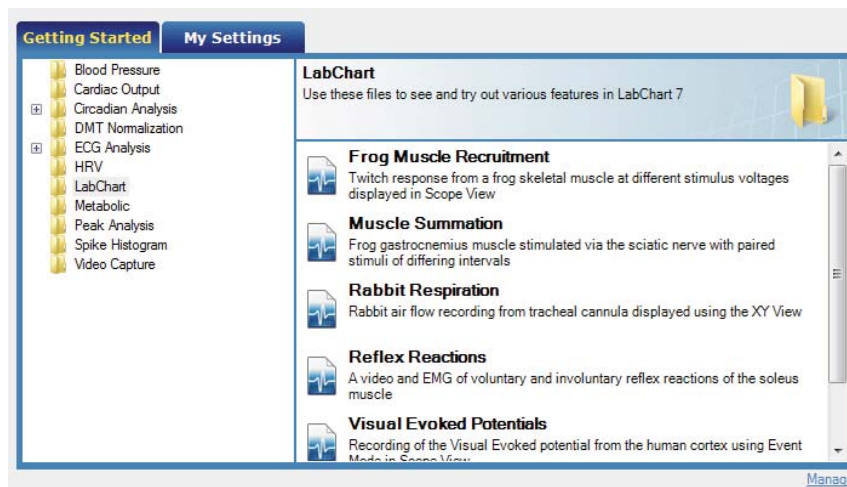
Assessing Recent Files Panel



Welcome Center Recent Files Panel

- Click the ‘New’ button to open a blank LabChart document
 - Select a file and click the ‘Open’ button or right-click to ‘Open File’
 - To open a new document with settings from another data file, select the file and click the ‘Clone’ button or right-click to ‘Clone Document Settings’.
 - Remove a file from the panel by right-clicking on the file to ‘Remove from List’.
- Note:** *This only removes the file from the panel and does not delete the file from the computer.*
- To edit or permanently remove a file, hover over a file to locate the file folder or right-click to ‘Open Containing Folder in Explorer’.

Welcome Center Gallery



Welcome Center Gallery Panel

- Once installed, LabChart 7 creates the **LabChart Gallery** folder in two locations: **Program Files > ADInstruments > LabChart 7 > Welcome Center** and **User > Documents** folder. Automatically installed subfolders include:
 - **Getting Started:** Located in the system ADInstruments folder. Contains LabChart Modules and Extensions Demo files and documentation.
 - **Experiments:** Located in the system ADInstruments folder. Contains all experiment related files.

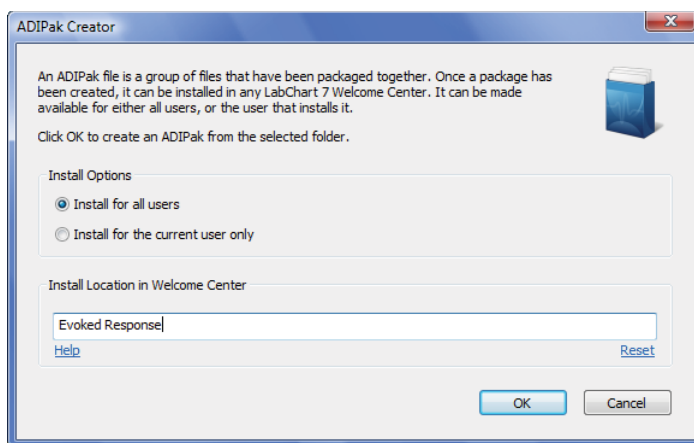
- **My Settings:** Located in user's Documents folder. Contains user defined settings files.
- **My Data:** Located in user's Documents folder.

Note: Subfolders present in **LabChart Gallery** folder appears as tabs in the Gallery panel. Empty folders with no files will not appear.

- To display custom files/folders in the Welcome Center Gallery, files and folders must be saved in the **LabChart Gallery** folders.
- Add a description to the Welcome Center folder/files by creating/editing the Labels text file found in all folders
- Click on '**Manage**' or right-click on Gallery tabs to select **Show "... in Windows Explorer** to open gallery tab folders in Windows Explorer.

Creating and Installing LabChart Package

LabChart package allows easy installation of content into Welcome Center Gallery. Creation of custom LabChart package is simple and files can be packaged into an .adipak file to be shared with colleagues, collaborators or students.



Creating LabChart package using ADIPak Creator

- Group all desired files to be packaged into one folder.
- Right-click on the folder and select '**Create LabChart package...**' to bring up the **ADIPak Creator** dialog.
- Select **Install for all users** to have files installed in the system folder or **Install for the current user only** to have files installed in the user's document folder.
- In the **Install Location in Welcome Center** panel, either use the suggested location or change the location. **Reset** would change the location to the one suggested
- Click **OK**.
- Double-click on a **LabChart package file** to install its contents.